



EXPLORER RE8524TA2

EXPLORER RE8524TA2

Explorer is Pace American's toy hauler, sport-camper for the person on the go! If you are looking to haul motorcycles, ATV's, go-karts, mountain bikes, kayaks, or hunting equipment, Explorer makes the perfect camping trailer to haul your outdoor gear.

Explorer trailers start with our rugged steel-framed Rallye auto platform for added strength, not the typical wood framework of some other manufacturers. Add in travel camper features such as beds, dining, kitchen, and bathroom amenities to make this the perfect living space for the well-equipped outdoorsman on the road. See our [page](#) or ask your local dealer what options are right for your outdoor adventures.

Explorer 8.5' wide bumper pull tag models are available in lengths from 18'-28' to meet your equipment hauling needs. All models are backed by our 3-year limited warranty, industry leading customer service, and a nationwide dealer network offering sales, service, and parts.

STANDARD FEATURES

- 11 Standard Exterior Colors
- Galley Sink with Faucet in Finished Countertop
- Cabinetry in Gentle Maple
- Removable Pedestal Table
- 24-1/2 Gallon Gray Water Tank
- Truck Body Style Flat Top Roof Design
- Automotive Style D-Bulb Weatherstripping
- Dexter EZ Ride Spring Axles
- Electric Brakes with Breakaway Switch, including Battery & Trickle Charger
- Chip Resistant Undercoating
- Underbelly Moisture Barrier
- Fully Enclosed Combination Shower/Bathroom
- Power Converter
- Precision, Jig Built, Solid Core Double Rear Swing Doors with Semi-Style Camlocks and T-Nuts.
- 1.1 cu ft Microwave
- 2.5 cu ft Refrigerator Inside Finished Cabinet
- 30 Gallon Water System w/City Water Fill & Dump Valve
- 30A 110v Shorepower Cord (25')
- 36" RV Side Door w/Stepwell
- White Vinyl Ceiling
- 3/8" Plywood Interior Walls
- 3/4" Plywood Floor
- Frames are phosphate power washed and all exposed metal is painted with premium quality paint
- Chip Resistant Frame Undercoating
- (2)Interior GFI Receptacles
- Fiberglass Insulation in Walls and Ceiling
- Non-Cracking TPO Front Cap
- 12v Deep Cycle Marine Battery in Box on Tongue
- High-Tech Roof Sealant
- Patented Dust-Proof Sidewall Design for Strength and Cleanliness
- .030 Aluminum Exterior
- 16" On-Center Sidewall Posts
- 6" I-Beam Frame
- Tank Monitoring Panel
- Custom Exterior Graphics
- Safety Chains or Cables with Security Clasp Hooks

And More



Fold-up bunks in this RT give you ample sleeping room and comfort, yet fold out of the way or, with pedestal table in, double as nice dinette area seating.



An Awning with Patty-O-Room option helps expand the living area. They're 12' in length and fold out of the way.

RE8524TA2

SPECIFICATIONS RE8524TA2

Overall Length	27'10"
Interior Length	23'7"
Box Width/OA Width	8'4"/8'6"
Box Height/OA Height	9'0"
Interior Width	8'0"/6'9"
Interior Height (to center of roof bow)	6'10"
Platform Height/Ball Height	22"/21"
Rear Doors	Double
Rear Door Width	88"
Rear Door Height	76"
Axles	3500# Tandem
Brakes	Electric
Frame	6" I-Beam
Tire Size	15" Bias
Hitch Ball Size	2-5/16"
Curb Weight	5350#
Hitch Weight	936#
Exterior	.030 Smooth
Floor	3/4" OSB
Sidewalls	3/8" Plywood
Payload Capacity	1650#
GVWR	7000#

NOTE: All standards, options, special packages, construction and specifications listed are subject to change. Photography may show optional items available at additional cost. Please consult your authorized dealer for the latest product information.

Starting @ \$12,574.00

OPTIONAL EQUIPMENT

- Video Package
- Audio Package
- AC with or without Heatstrip
- Wire & Frame for AC
- Furnace
- Fold Down Bunk Bed
- Finished Partition Wall w/Door
- Generators
- Patty-O-Room
- Scissor, Stabilizer or Drop Down Jacks
- In-Floor Spare Tire Compartment
- Spare Tire w/ Aluminum Rim
- Interior Spare Tire Mount
- Tongue Mounted Spare
- Aluminum Helmet Holder
- Spare Tire w/ Mount
- Overhead Cabinets
- Microwave
- Rear Ramp Door
- Aluminum Tread Plate (ATP) Stoneguard
- Beavertail
- Windows with Sliders-
Vertical/Horizontal/T-Slide
- Generator Prep Package
- Windows with Screens
- Generator Fuel Supply Package •
Baggage Doors
- Fuel Fill Doors
- Utility Doors
- Aluminum Access Doors
- Stainless Steel Swivel Handles for Ramp
Door
- Flow Through Sidewall Vents- SX or LX •
Non-Powered Roof Vent
- White Aluminum Walls
- White Vinyl Walls
- RTP Floor- Black or Gray
- Indoor/Outdoor Carpet
- Black Marble Vinyl Floor
- Black & White Checker Vinyl Floor •
Aluminum Tread Plate (ATP) Floor •
Escape Hatch
- Fan-Tastic Power Roof Vent
w/Thermostat
- Maxxair Vent Cover
- Wolmanized Plywood Floor
- And More

With Our Factory Direct Program

Pick Up Your Pace & Save \$\$\$

Five Factory Locations To Choose From:

**11550 Harter Drive
Middlebury, IN 46540**

**2290 McGuffey Road
McGregor, TX 76657**

**210 North Highway 91
Hurricane, UT 84737**

**Colony Industrial Park
223 Rip Wiley Road
Fitzgerald, GA 31750**

**2000 W. Oak St.
Lebanon, OR 97355**

Nationwide Sales and Delivery



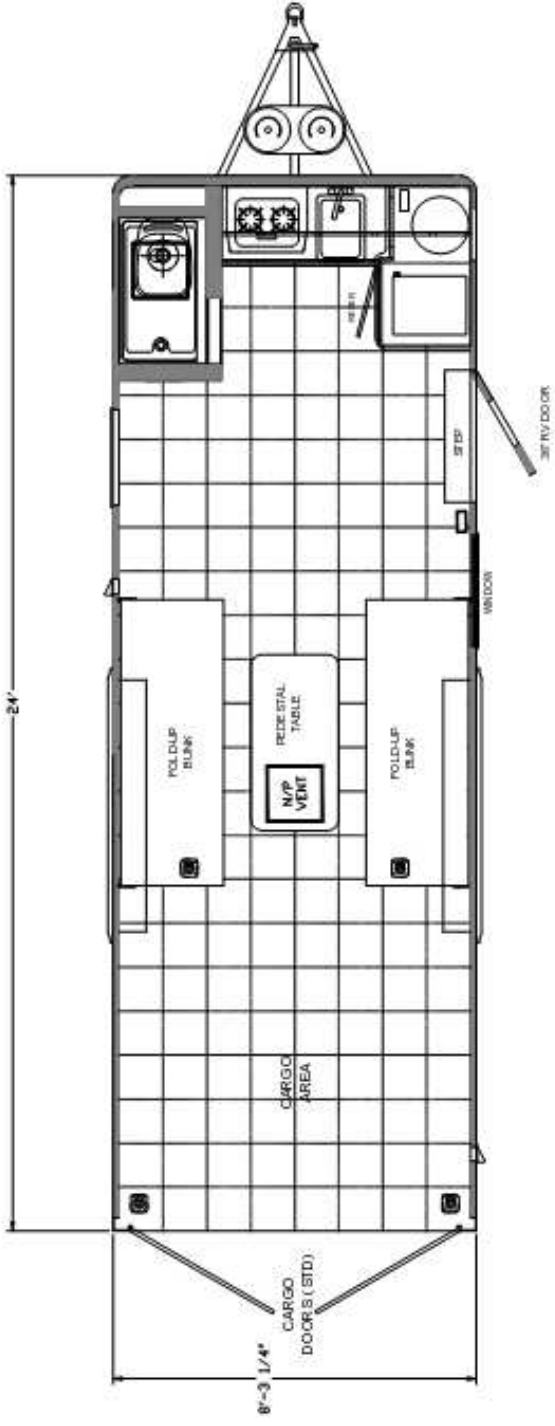
We're Behind You, All The Way!

Toll Free (877) 258-1445

www.BestPriceTrailers.com

FLOORPLAN PLAYGROUND

DATE: _____ TITLE: PLAN VIEW MODEL: RE 8524TA2 DWG NO: _____



111550 HARTER DRIVE
MIDDLEBURY, IN. 46540
APPROVED BY: _____
SCALE: N.T.S. DWG. BY: RAM
REVISED: _____

NOTES:
GRID=12'x12' SQUARES

REV. #	DATE	DESCRIPTION

PRICE AND/OR CLING PROPRIETARY RIGHTS TO THE MATERIAL DISCLOSED HEREIN. NEITHER THIS DRAWING NOR ANY REPRODUCTION THEREOF MAY BE USED TO MANUFACTURE ANYTHING WITHOUT PERMISSION IN WRITING.